

Rivacold SMF022Y002 Plug and Play unit

Specifications

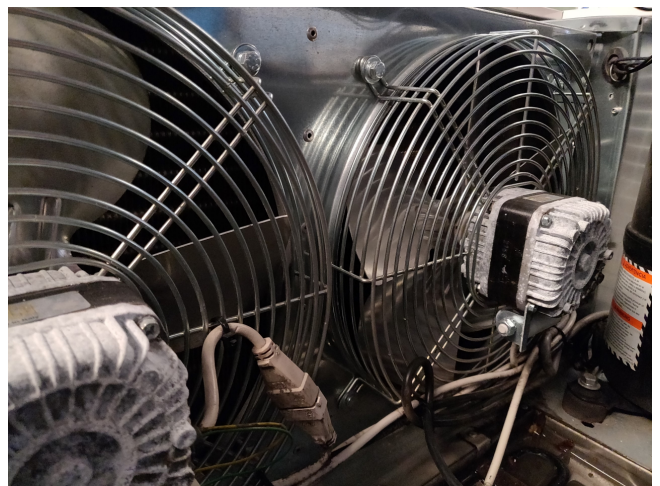
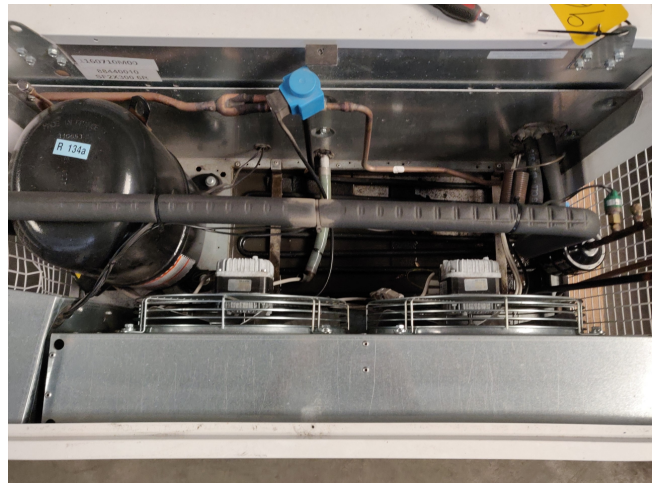
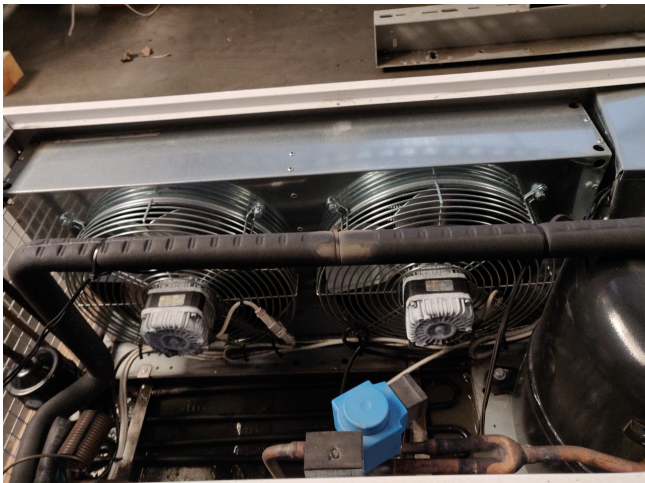
| | |
|------------------------------------|---|
| Marca | Rivacold |
| Tipo | SMF022Y002 Plug and Play unit |
| Refrigerante | Freon |
| kW at +10°C/+40°C | 2.96 |
| kW at 0°C/+40°C | 2.46 |
| La línea de líquido filtro secador | ✓ |
| m3 / h | 2500 |
| Comentarios | Our capacity table is based on Manufacturer spec. We would like to know which refrigerant is in your system |
| Peso kg. | 116kg |
| Condensing Unit | ✓ |
| Tamaños | 1100x940x450 mm (LxWxH) |
| Stock | 1 |



Description

Used Rivacold SMF022Y002 Plug and Play unit

Used but in good condition Rivacold Plug and Play type SMF022Y002/AN with a scroll compressor from Alup type TFH4518Y-T, 2 fans with 35/80W and 1200-1550 RPM, with Liquid line filter drier and other components (see pictures) . "*Why choose for HOSBV? Were not only the largest used refrigeration specialist in Europe, but also, we deliver all equipment including an extensive test, warranty and industrial cleaning. Optional we can arrange shipment and export documents."





| Art. Nr. | Type | Spanning | Comp. | Comp. | Vermogen +5/32°C | Volume +5/32°C | Vermogen 0/32°C | Volume 0/32°C | Vermogen -5/32°C | Volume -5/32°C | Prijs |
|----------|----------------|----------|-------|--------|---------------------|-------------------|--------------------|------------------|---------------------|-------------------|-------|
| | | V | PK | cm³ | kW | m³ | kW | m³ | kW | m³ | EUR |
| 00082716 | SFM003Y001-DIX | 1 x 230 | 3/7 | 14,30 | 0,83 | 6,40 | 0,72 | 4,10 | 0,61 | 3,30 | 1.917 |
| 00082717 | SFM006Y001-DIX | 1 x 230 | 1/2 | 17,70 | 1,14 | 10,50 | 0,97 | 6,20 | 0,81 | 4,80 | 2.140 |
| 00082718 | SFM009Y001-DIX | 1 x 230 | 5/8 | 26,20 | 1,48 | 15,20 | 1,26 | 9,20 | 1,05 | 7,00 | 2.413 |
| 00082719 | SFM009Y001-DIX | 1 x 230 | 1 | 26,20 | 1,55 | 16,00 | 1,32 | 9,70 | 1,09 | 7,30 | 2.425 |
| 00082720 | SFM016Y001-DIX | 1 x 230 | 1,2 | 34,37 | 2,02 | 20,90 | 1,76 | 14,30 | 1,51 | 11,30 | 2.533 |
| 00082721 | SFM022Y002-DIX | 3 x 400 | 1,3 | 53,20 | 2,96 | 35,70 | 2,46 | 22,10 | 1,96 | 16,30 | 3.648 |
| 00082722 | SFM034Y002-DIX | 3 x 400 | 1,5 | 74,25 | 3,68 | 47,00 | 3,12 | 30,10 | 2,57 | 23,00 | 3.660 |
| 00082723 | SFM054Y002-DIX | 3 x 400 | 2,5 | 124,40 | 5,56 | 76,70 | 4,71 | 50,20 | 3,88 | 38,40 | 4.598 |
| 00082724 | SFM068Y012-DIX | 3 x 400 | 3 | 135,78 | 6,98 | 100,80 | 5,94 | 71,60 | 4,90 | 52,70 | 5.244 |

Nonactive versie -15/-25°C - R452A



Your partner for used commercial and
industrial refrigeration equipment
